

T H E S U L L A I R  
A I R C O M P R E S S O R

**750XHH/900XHDL**

750 CFM AT 500 PSIG/900 CFM AT 350 PSIG  
355 L/S AT 34.5 BAR/425 L/S AT 24 BAR

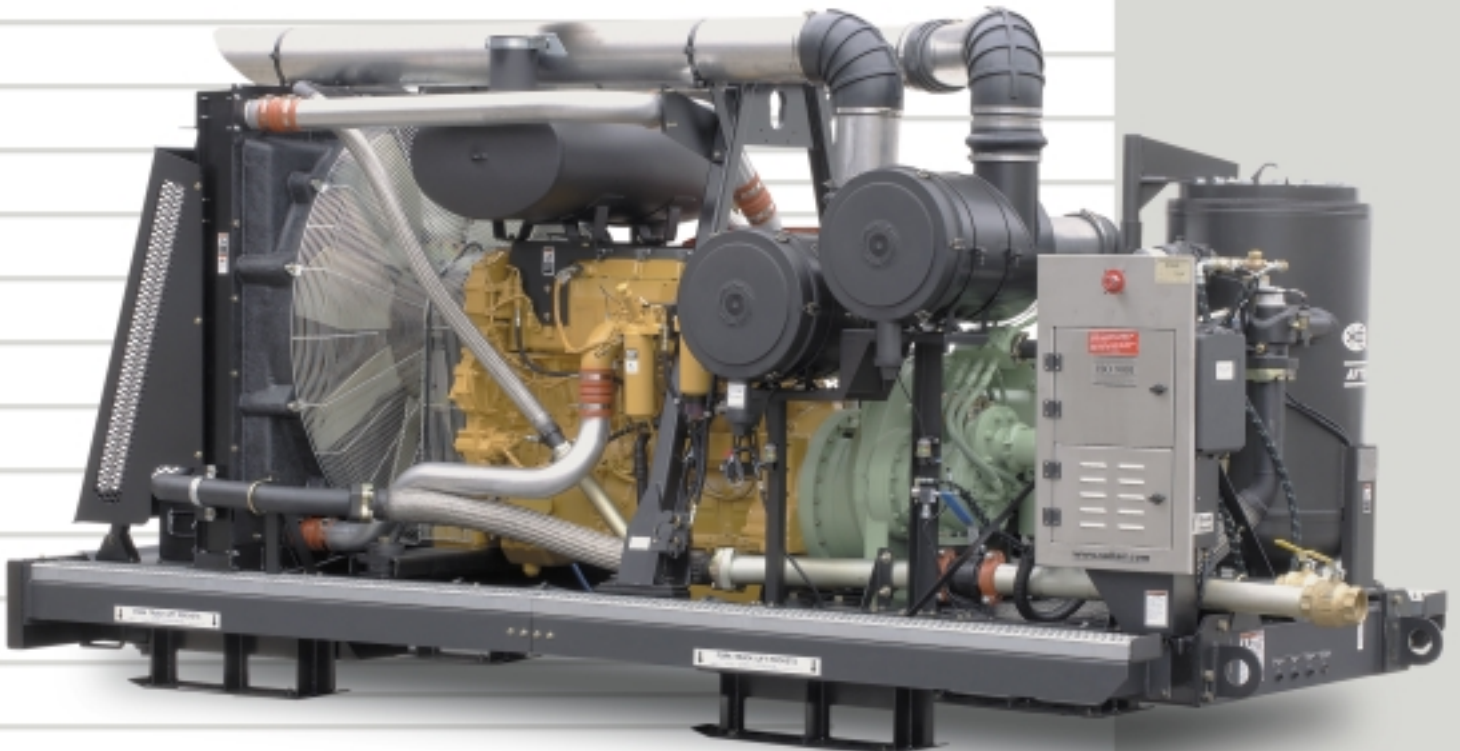
**900XHH/1150XHDL**

900 CFM AT 500 PSIG/1150 CFM AT 350 PSIG  
425 L/S AT 34.5 BAR/543 L/S AT 24 BAR

**1150XHH/1350XHDL**

1150 CFM AT 500 PSIG/1350 CFM AT 350 PSIG  
543 L/S AT 34.5 BAR/637 L/S AT 24 BAR

ROTARY SCREW COMPRESSOR  
COMPASS CONTROLLER  
ELECTRONIC ENGINE CONTROL  
DUAL CAPACITY/DUAL PRESSURE  
WEATHER-PROOF INSTRUMENT PANEL  
PROTECTIVE SHUTDOWN SWITCHES  
CONTAINMENT FRAME  
REMOTE FLUID DRAINS  
TWO-STAGE AIR FILTERS WITH  
SAFETY ELEMENTS  
AWF COMPRESSOR FLUID  
0 to 100% CAPACITY CONTROL





**"COMPASS" Controller**  
The Brains of the system monitors every aspect of the compressor and engine.



**Monitoring and Control System**  
The user friendly Control Panel (housed in a weathertight enclosure) provides real time system information.



**Rotary Screw Compressor**  
Two-stage, fluid flooded. Cast iron housing is dimensionally stable, thick-walled and machined to close tolerances.



**Sullair AWF Compressor Fluid**  
Improved hot and cold weather lubrication. Longer compressor fluid life. Extended air-end warranty.

**"COMPASS" Controller**  
Gauges and a LCD Graphic Display on the "COMPASS" Controller indicate:

- discharge pressure,
- discharge temperature,
- ambient air temperature,
- separator restriction,
- aftercooler air temperature and louver activation if equipped,
- engine speed,
- hours of operation,
- voltage,
- engine coolant temperature,
- engine coolant level,
- fuel level,
- fuel usage rate,
- fuel pressure,
- fuel temperature,
- percent engine load,
- engine air temperature, and
- engine oil pressure.

compressor and engine status

Indicator lights for:

- low fuel,
- high compressor temperature,
- compressor shutdown and warning,
- engine shutdown and warning.

An engine diagnostic service port, displayed diagnostic messages and retrievable shutdown history includes all monitored system parameters at time of shutdown, high/low selector switch and a rocker-type start switch are also provided, back lit switches and gauges for night use, E-stop, and auto and remote start capability

**Dual Performance**  
The compressor incorporates well proven Spiral Valve technology into the first stage of the air-end to achieve dual performance. Two distinct compressor models in one package.

**0 to 100% Capacity Control**  
Automatic inlet valve and unloaded starting.

**Two-Stage Dry-Type Filters**  
Filters incorporate safety elements and are positioned to draw cool ambient air.

**Open Frame Design**  
Heavy duty frame with mounting feet offers complete fluid containment and remote "bulkhead" drain valves for all fluids. The unit is provided without on-board fuel tanks. Quick connect fuel couplings to easily fuel from a remote fuel tank. Single point lifting bail.

**Low Emission Engine Technology**  
Complies with Tier 3 and Stage 3 emission legislation.

**Air End Warranty**  
5 year or 10,000 hour warranty when continuously serviced at the recommended intervals with Sullair AWF Compressor Fluid and filters.

**Options**  
Sullair's options allow you to customize the compressor to meet your specifications without paying for items you don't need.

- Block heater
- Aftercooler with moisture separator
- Louvers
- Special color paint



This product is manufactured to the highest quality standards in an ISO 9001 certified quality system.

**SPECIFICATIONS, WEIGHTS AND DIMENSIONS—SULLAIR 750XHDL, 900XH, 900XHDL, 1150XH, 1150XHDL, 1350XH COMPRESSORS**

Delivery @ Rated Pressure	Rated Pressure psig (bar)	Designated Model	Weight (wet) lbs (kg)	Length in (mm)	Width in (mm)	Height in (mm)
*750 / 900 cfm (355 L/S / 425 L/S)	500 / 350 (34.5/24)	Open Frame	13050 (5919)	182 (4623)	86 (2185)	87 (2210)
**900 / 1150 cfm (425 L/S / 543 L/S)	500 / 350 (34.5/24)	Open Frame	13050 (5919)	182 (4623)	86 (2185)	87 (2210)
***1150 / 1350 cfm (543 L/S / 637 L/S)	500 / 350 (34.5/24)	Open Frame	13050 (5919)	182 (4623)	86 (2185)	87 (2210)

Engine Make	Engine Type	Engine Model	Displacement cu in (cc)	Cylinders	Cycles	Bore and Stroke in (mm)	Rated Speed rpm	Rated Power hp (kW)
*Caterpillar	Diesel	C-15 ACERT	928 (15.2)	6	4	5.4 X 6.7 (137 X 171)	1800	475 (354)
**Caterpillar	Diesel	C-15 ACERT	928 (15.2)	6	4	5.4 X 6.7 (137 X 171)	1800	540 (403)
***Caterpillar	Diesel	C-18 ACERT	1106 (18.1)	6	4	5.7 X 7.2 (145 X 183)	1800	630 (476)



www.sullair.com

SULLAIR CORPORATION, 3700 East Michigan Blvd., Michigan City, IN 46360 Telephone: 1-800-SULLAIR or 1-219-879-5451 Fax: 1-219-874-1504  
 SULLAIR EUROPE, Zone des Granges, BP 82, 42602 Montbrison, Cedex, France, Telephone: (33) 4.77.96.84.70 Fax: (33) 4.77.96.84.99  
 SULLAIR ASIA LTD., 74 Joo Koon Circle, Jurong, Singapore 629093, Telephone: (65) 861-1211 Fax: (65) 861-2967 Telex RS25117  
 SULLAIR ASIA, 1 Sullair Road, Chiwan, Shenzhen, China 518068, Telephone: (86) 755-6853477 or (86) 755-6851686 Fax: (86) 755-6853473  
 SULLAIR TAIWAN LTD., 3F-1., No.248, Chung Shan Road, Lin-Kou Hsiang, Taipei Hsien, Telephone: (02)2601-3500, Fax: (02)2601-3032  
 SULLAIR ARGENTINA, Goncalves Dias 1145, 1276 Buenos Aires, Argentina, Telephone: 54-11-5941-4444, Fax: 54-11-5941-4549

SSL-1169A Specifications subject to change without notice. © Copyright 2007 Sullair Corporation. All rights reserved. EA/03/07/1