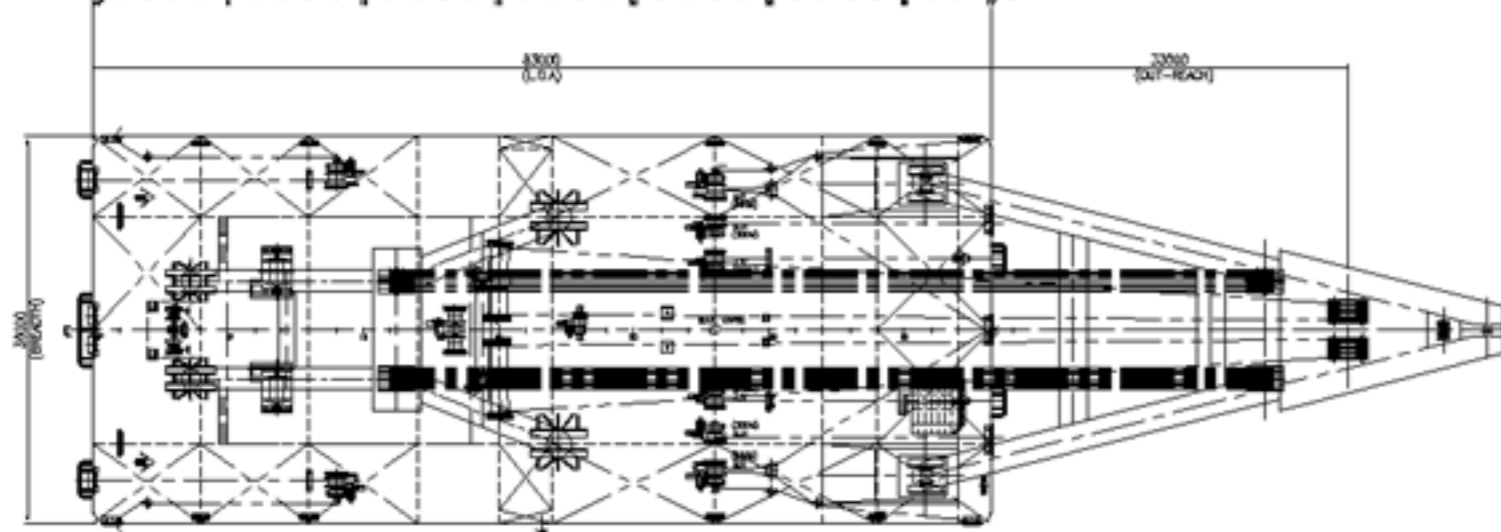
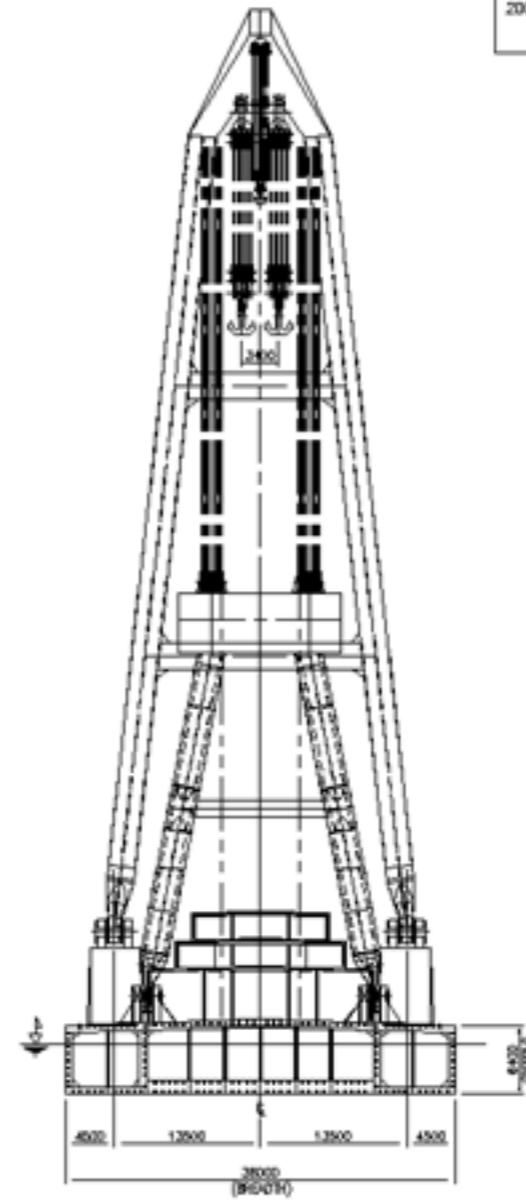
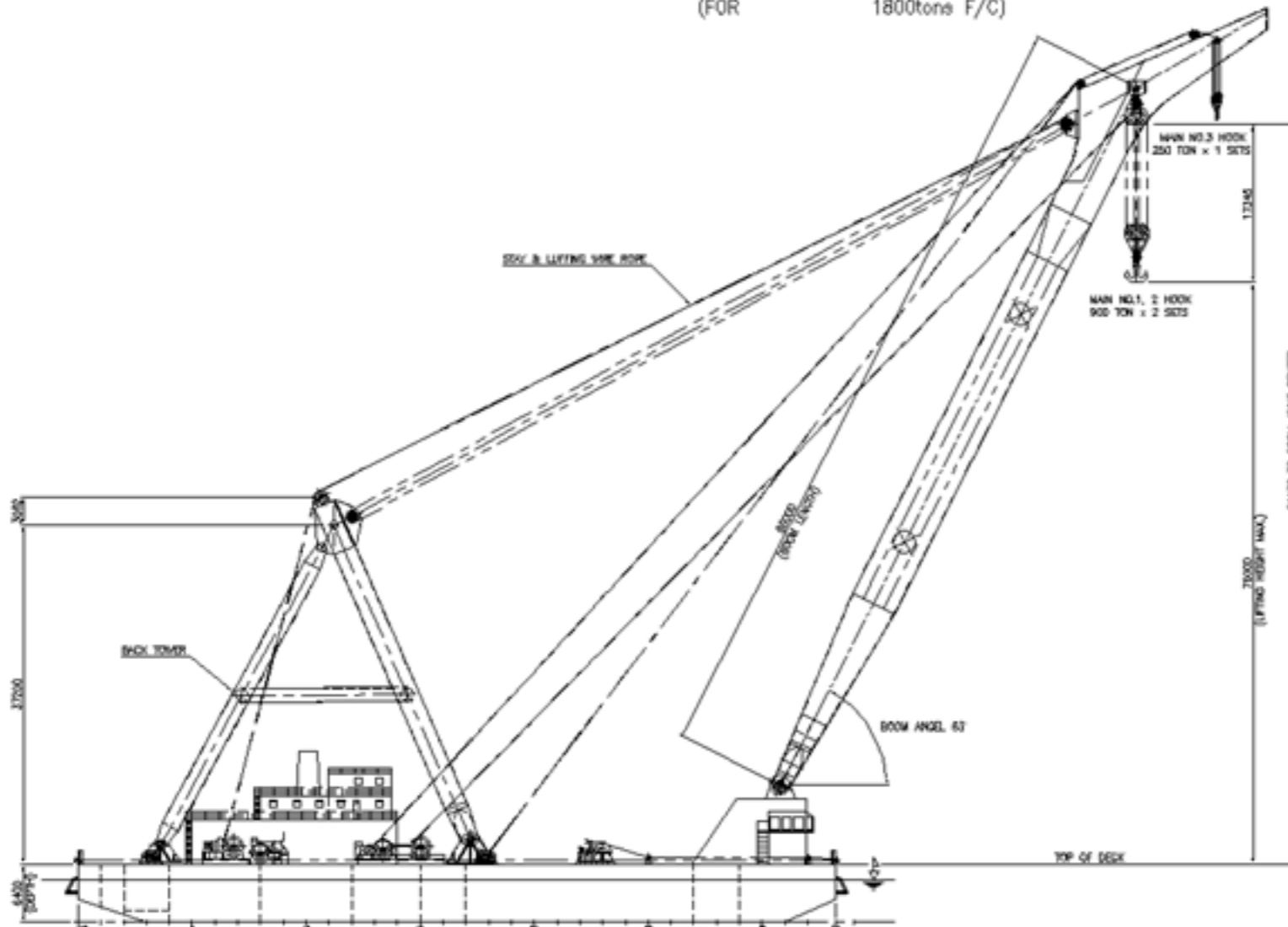


# GENERAL ARRANGEMENT

(FOR 1800tone F/C)



## BIBLIOGRAPHY

DATE	DESCRIPTIONS
2004.11	- 검토안 시공 도 설계 변경 1) 원안번호 : 1800톤부 변경 2) OWNER :

## PRINCIPAL DIMENSIONS KUM YONG NO.1800 F/C

TYPE	FLOATING CRANE
LENGTH O. A	83,000 M
BREADTH (M.L.D.)	36,000 M
DEPTH (M.L.D.)	6,400 M
DRAFT (D.L.W.L.)	4,600 M
GROSS TON	6885 TONS
DECK CAMBER	500 mm
MAIN ENGINE	C.M/ 1280HP x 3SETS
GENERATOR ENGINE	DAEWOO/ 148KW x 2SETS
LIFTING CAPACITY	1800 TONS
LIFTING SPEED, LOAD	1.8 M/MIN
LIFTING SPEED, UNLOAD	3.6 M/MIN
LIFTING HEIGHT	76,000 M
LIFTING WINCH	62TONS x 2SETS
MAIN NO.1,2 WINCH	30TONS x 2SETS
MAIN NO.3 WINCH	25TONS x 1SETS
NO.1,6 MOORING WINCH	25TONS x 2SETS
NO.2,5 MOORING WINCH	25TONS x 2SETS
NO.3,4 FND ANCHOR WINCH	15TONS x 2SETS
NO.7,8 AFT ANCHOR WINCH	32TONS x 2SETS
NO.9 GEN WINCH	13TONS x 1SETS
NO.10 WINDLASS	18TONS x 2SETS

金龍開發株式會社  
KUM YONG DEVELOPMENT CO., LTD.

SEHO ENGINEERING

PROJECT TITLE: 1800TON FLOATING CRANE

DESIGN TITLE: GENERAL ARRANGEMENT

DATE	SCALE	DESIGN NO.
2004.11.30	1 / 30	1001

DRAWN BY	CHECKED BY	APPROVED BY
W.S. Lee	S.K. Kim	